



NCD ThinPATH PC
User's Guide

Copyright

Copyright © 2000 by Network Computing Devices, Inc. (NCD). The information contained in this document is subject to change without notice. Network Computing Devices, Inc. shall not be liable for errors contained herein or for incidental or consequential damages in connection with the furnishing, performance, or use of this material. This document contains information which is protected by copyright. All rights are reserved. No part of this document may be photocopied, reproduced, or translated to another language without the prior written consent of Network Computing Devices, Inc.

Trademarks

Network Computing Devices, ThinSTAR, and XRemote are registered trademarks of Network Computing Devices, Inc. ThinPATH, Explora, Explora Pro, ECX, HMX, HMXpro, HMXpro24, WinCenter, WinCenter Pro, WinCenter Connect, NCDnet, and NCDware are trademarks of Network Computing Devices, Inc.

Other product and company names mentioned herein are the trademarks of their respective owners. All terms mentioned in this book that are known to be trademarks or service marks have been appropriately capitalized. NCD cannot attest to the accuracy of this information. Use of a term in this book should not be regarded as affecting the validity of any trademark or service mark.

Disclaimer

THE SOFTWARE PRODUCTS ARE PROVIDED "AS IS" WITHOUT WARRANTY OF ANY KIND. TO THE MAXIMUM EXTENT PERMITTED BY APPLICABLE LAW, NCD FURTHER DISCLAIMS ALL WARRANTIES, INCLUDING WITHOUT LIMITATION, ANY IMPLIED WARRANTIES OF MERCHANTABILITY, FITNESS FOR A PARTICULAR PURPOSE AND NONINFRINGEMENT. THE ENTIRE RISK ARISING OUT OF THE USE OR PERFORMANCE OF THE SOFTWARE PRODUCTS AND DOCUMENTATION REMAINS WITH THE END USER.

TO THE MAXIMUM EXTENT PERMITTED BY APPLICABLE LAW, IN NO EVENT SHALL NCD OR ITS SUPPLIERS BE LIABLE FOR ANY CONSEQUENTIAL, INCIDENTAL, DIRECT, INDIRECT, SPECIAL, PUNITIVE, OR OTHER DAMAGES WHATSOEVER (INCLUDING, WITHOUT LIMITATION, DAMAGES FOR LOSS OF BUSINESS PROFITS, BUSINESS INTERRUPTION, LOSS OF BUSINESS INFORMATION, OR OTHER PECUNIARY LOSS) ARISING OUT OF THE USE OF OR INABILITY TO USE THE SOFTWARE PRODUCTS OR DOCUMENTATION, EVEN IF NCD HAS BEEN ADVISED OF THE POSSIBILITY OF SUCH DAMAGES. BECAUSE SOME STATES/JURISDICTIONS DO NOT ALLOW THE EXCLUSION OR LIMITATION OF LIABILITY FOR CONSEQUENTIAL OR INCIDENTAL DAMAGES, THE ABOVE LIMITATION MAY NOT APPLY TO YOU.

Revision History

April 2002 NCD ThinPATH PC User's Guide

Software Version

NCD ThinPATH PC Software v.1.1

Contents

NCD ThinPATH PC Basics	1
What is a ThinPATH PC?	1
Starting ThinPATH PC	2
Shutting Down ThinPATH PC	2
Managing Connections	3
What is a Connection?	3
Starting Connections	3
Ending Connections	3
Adding Connections	5
Editing Connections	6
Deleting Connections	6
Navigating Between Connections	7
Configuring ThinPATH PC	8
Using NCD ThinPATH PC Properties	8
Disabling ThinPATH PC and Returning to Microsoft Windows	9
Returning to ThinPATH PC	9
Control Panel Settings	10
Registering and Running Local Applications	11
Launching Web Applications	12
Setting Your Management Server	13
Verifying Component Version Numbers	13
Securing Access to ThinPATH PC	13

Contents

Creating a Password	13
Entering a Password	15
Changing a Password	15
Deleting a Password	16
Editing Security Properties	17
Troubleshooting	18
Index	19

NCD ThinPATH PC User's Guide

NCD ThinPATH PC Basics

This guide describes basic operating procedures for NCD ThinPATH PC. It explains how to:

- start and shutdown ThinPATH PC
- add and start connections
- navigate between connections
- end your work session
- configure ThinPATH PC

What is a ThinPATH PC?

NCD ThinPATH PC manages PCs as thin clients for accessing server-based computing. The product allows customers to reduce the cost of owning and maintaining PC desktops. The ThinPATH PC user interface makes application access easy but it also protects the PC from unapproved desktop changes.

ThinPATH PC is easily distributed to each desktop from a centralized web server. No desktop hardware or software upgrades are required before installation. The product supports the existing PC network, including any customer specific requirements such as VPN security, smart card authentication, or networked printing.

ThinPATH PC provides a cost-effective migration strategy in which you use existing PCs as a transition towards server-based computing with applications that are available from Microsoft Terminal Services, Citrix MetaFrame or a web server. ThinPATH PC system administrators can also allow access to locally installed PC

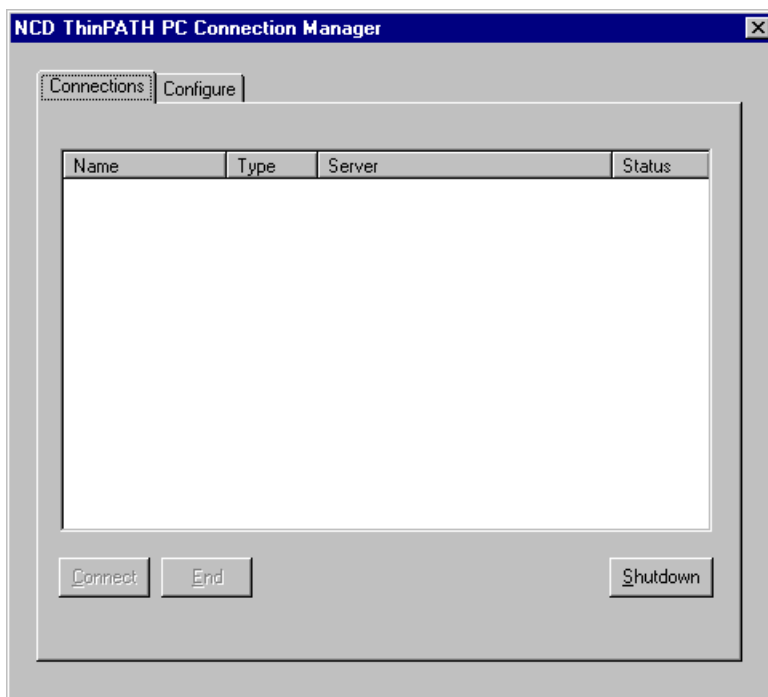
applications through the dedicated user interface.

Starting ThinPATH PC

If a system administrator has installed the ThinPATH PC software, just power on the PC and the ThinPATH PC Connection Manager displays.

OR

Install the ThinPATH PC software and then power on your PC. Refer to the *ThinPATH PC Installation Guide and Release Notes* for install instructions.



Shutting Down ThinPATH PC

Click **Shutdown** on the Connections tab to turn off your PC or bring

your PC into a state where you can turn it off.

Managing Connections

What is a Connection?

A connection is a terminal server login session or local application launched from ThinPATH PC. A program that provides the ability to connect to servers is called a connection client. Three connection clients are included in the NCD ThinPATH PC: the Microsoft Remote Desktop Client (RDP), the Citrix ICA Client and Microsoft Internet Explorer.

Note This manual does not provide information on the configuration or use of these three connection clients. Refer to the online help that came with the product.

Starting Connections

On the Connections tab, double-click the connection you want to start. Or, select the connection and click **Connect**.

Ending Connections

To log off and end your connection:

1. If you connected to a Windows server or MetaFrame desktop:
 - Close all applications.
 - Click **Start** on the taskbar at the bottom of the Windows server desktop.
 - Select Logoff, then click **OK**. The Windows server closes any programs that are still running.

Note If you connected to an application instead of a server's desktop, closing the application terminates the connection.

2. If you have an Internet Explorer connection, click the **X** in the titlebar to close it.

3. If problems on the server makes your connection unresponsive to a normal log off, press **Ctrl+Alt+End** to bring up the NCD ThinPATH PC Connection Manager, select the connection name and click **End**. Your session is disconnected, but you are not logged off.

When you reconnect to the session later by logging on again, your applications resume. Because disconnect sessions still consume server resources, most system administrators prefer that you log off.

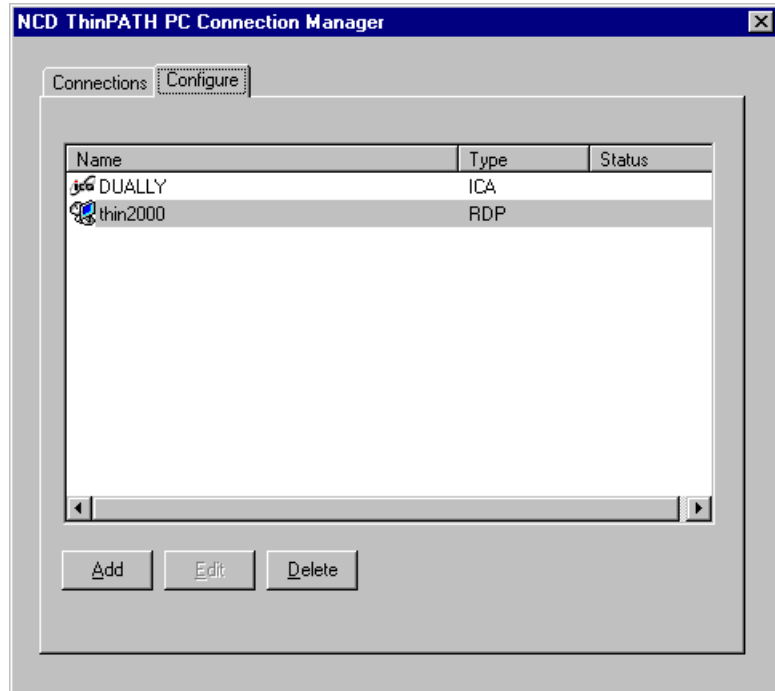
When you log off, your programs are terminated and the session is ended. You must restart the programs at the next log on.

Once a session ends, the NCD ThinPATH PC Connection Manager appears. Repeat the steps to end all active connections and then you can shutdown ThinPATH PC.

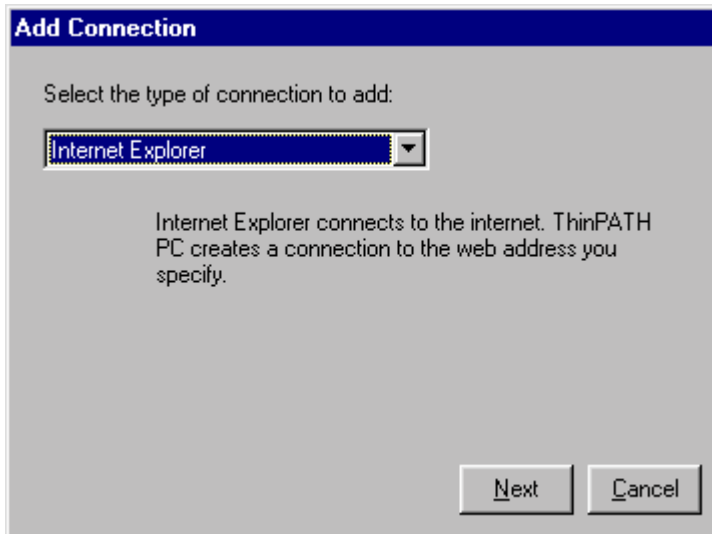
Adding Connections

To add a connection:

1. On the Configure tab, click **Add**.



The Add Connection dialog displays.



2. From the drop-down list, select the type of connection to add and click **Next**. The dialog for the connection type you selected displays.
3. Enter the name of the new connection.
4. Enter the information required for the connection. This may be the address of the connection or the name of a server for a Remote Desktop connection. Click **Finish**.

Editing Connections

To edit a connection:

1. On the Configure tab, select the connection to be edited and click **Edit**.
2. Change the connection name, URL, or the server you want to be connected to.

Deleting Connections

To delete a connection:

1. On the Configure tab, select the connection to be deleted.
2. Click **Delete**.

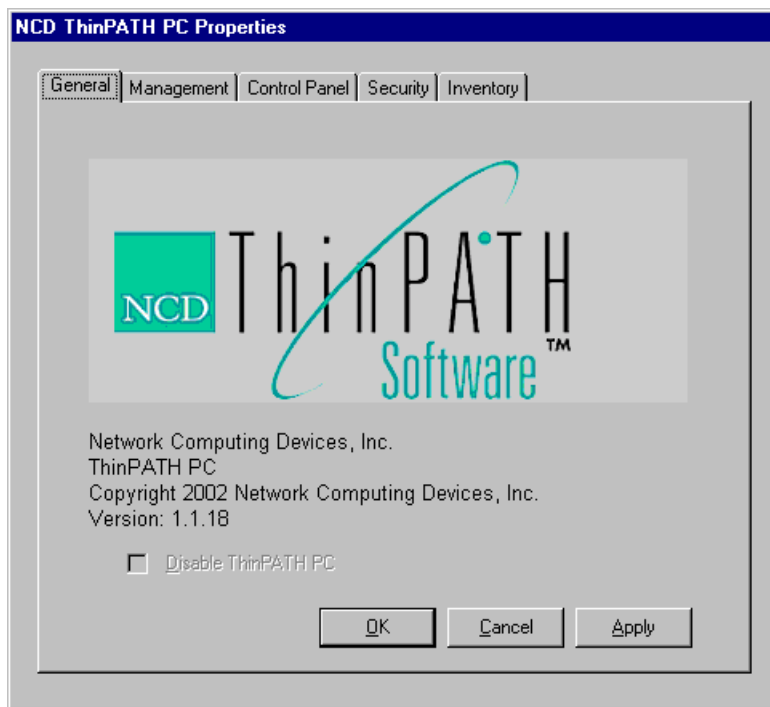
Navigating Between Connections

To navigate between multiple running connections:

Select the next active connection.	Ctrl+Alt+Uparrow
Select the previous active connection.	Ctrl+Alt+Downarrow
Open the ThinPATH PC window.	Ctrl+Alt+End
List all active connections.	Ctrl+Alt+End
Select the next active connection.	Alt+Tab

Configuring ThinPATH PC

From the ThinPATH PC window, press **F2** to bring up the NCD ThinPATH PC Properties.



Using NCD ThinPATH PC Properties

After making changes, click **Apply** to apply changes without closing PC Properties, click **OK** to apply changes and close PC Properties, or click **Cancel** to close PC Properties without applying changes.

Note Your system administrator may have set a password in order to prevent you from making changes to PC Properties. In that case, some fields may be grayed out (inactive) until you enter the password on the PC Properties > Security dialog. If no password has been set, you can make changes to any PC Properties field.

Disabling ThinPATH PC and Returning to Microsoft Windows

This option is not available by default. To enable this option:

1. Select the Security tab.
2. Enter a password and click **Edit Security**. The Security Properties window displays.
3. Select Disable ThinPATH PC.
4. Click Allow users to run Microsoft Windows. Click OK.
5. Select the General tab and check **Disable ThinPATH PC**.

When you restart your PC, you will see the Microsoft Windows desktop.

Returning to ThinPATH PC

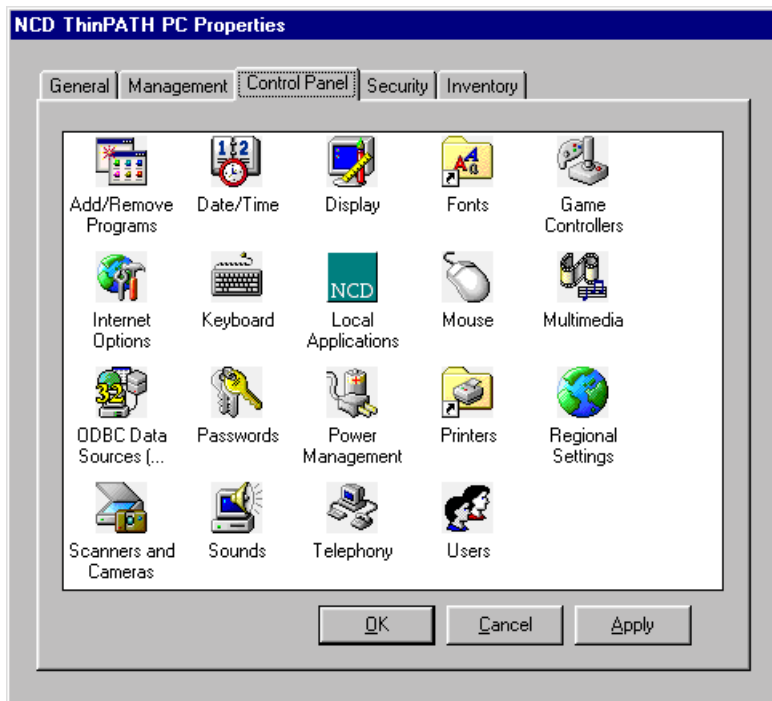
To return to ThinPATH PC:

1. Run **ncdcfg.exe**.
2. Press **F2** to display NCD ThinPATH PC Properties.
3. On the General tab, uncheck the **Disable ThinPATH PC** checkbox and click **Apply**.
4. On the ThinPATH PC dialog, click **Shutdown**.

When you restart your PC, you will see the ThinPATH PC window.

Control Panel Settings

From NCD ThinPATH PC Connection Manager, click **F2** to display NCD ThinPATH PC Properties. The Control Panel tab mirrors the Microsoft Windows Control Panel containing many of the same icons. The following screen is a representation of what you might see on your screen.



Refer to your Microsoft Windows Help for additional information.

Registering and Running Local Applications

You can access local applications on your PC through ThinPATH PC. Once those applications are registered with ThinPATH PC, they appear as connection types in the ThinPATH PC Configure tab.

To register local applications with ThinPATH PC:

1. Press **F2** to display ThinPATH PC Properties and select the Control Panel tab.
2. Double-click the NCD Local Applications icon. The Local Application dialog displays.

Note The list of applications are either specified by the system or defined in the PC Properties Security tab.

3. Select an application from the list to register with ThinPATH PC and click **OK**.

Note If you cannot find a specific application to register, click **Browse** to search for the application on the PC, then click **OK**.

The Specify Connection Type dialog displays.

4. Enter the Connection type; e.g., *trans*, a short name that reminds you of the application.
5. Enter a Friendly name; e.g., *FTP*, a short name to use as the connection type in ThinPATH PC's Configure > Add Connection list.
6. Enter a Description that helps you remember what this application does; e.g., *transfer files to the print vendor*. The description appears in ThinPATH PC's Configure > Add window for that connection type. Click **OK**.
7. Click **Show Registered Apps** and verify that the application is listed on the NCD Registered Applications list.

Note If you want to edit the properties of a registered program or you want to unregister a program, click **Full Properties** and make your changes in the Properties of Registered Application dialog.

8. Click **OK** and click **Close**.
9. Click **OK** to close ThinPATH PC Properties. The NCD ThinPATH PC Connection Manager displays.

To create connections to local applications:

1. Click the **Configure** tab.
2. Click **Add**.
3. Select a local application from the drop-down list. Click **Next**.
4. Enter the name of your local application connection. If you want the local application to open a specific document, enter the path and name of that document in the **Document** field. Click **Finish**.

The local application displays in the ThinPATH PC connection list.

Launching Web Applications

Instead of starting connections from ThinPATH PC's Connection tab, you can start connections from web pages.

To launch applications from a web page:

1. Select the **Management** tab on the NCD ThinPATH PC Properties sheet.
2. Enter the URL or IP address of the web page in the **Home page** box. Click **Apply**. Click **OK** to exit ThinPATH PC Properties.

Note See your system administrator if you do not know the web site that launches the web applications.

To dismiss NCD ThinPATH PC, click the **X** in the title bar. When the PC restarts, NCD ThinPATH PC Connection Manager is not automatically displayed. Press **Ctrl+Alt+End** to display ThinPATH PC. Press **F2** to access PC Properties.

To disable your web application page and return to the ThinPATH PC Connection tab, click **Reset**.

Setting Your Management Server

Note You will be able to specify a server in a future release. Currently this functionality is not available.

Verifying Component Version Numbers

To verify the version number of a specific installed component, select the Inventory tab.

Securing Access to ThinPATH PC

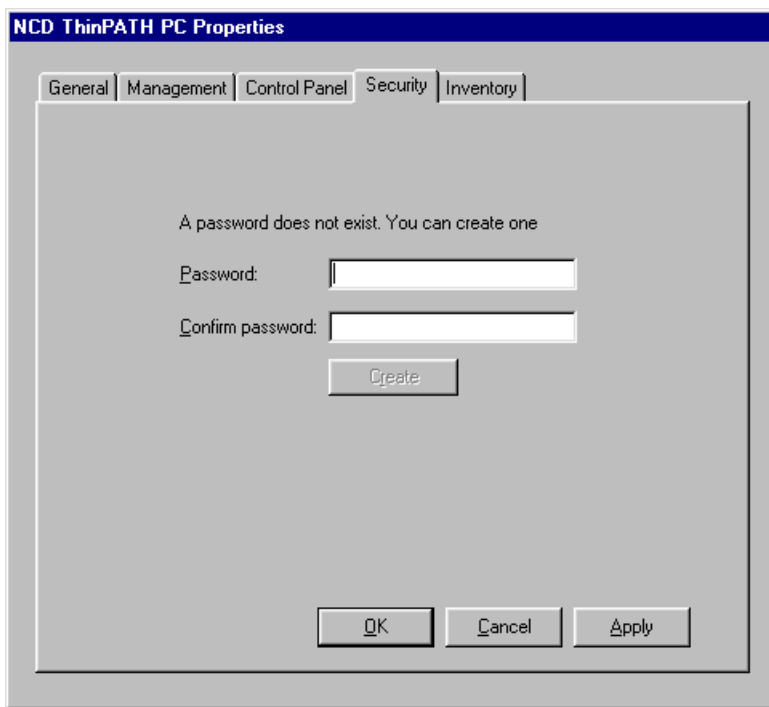
You can create a password to restrict access to NCD ThinPATH PC properties and thus prevent unauthorized changes to PC properties.

Creating a Password

To create a password:

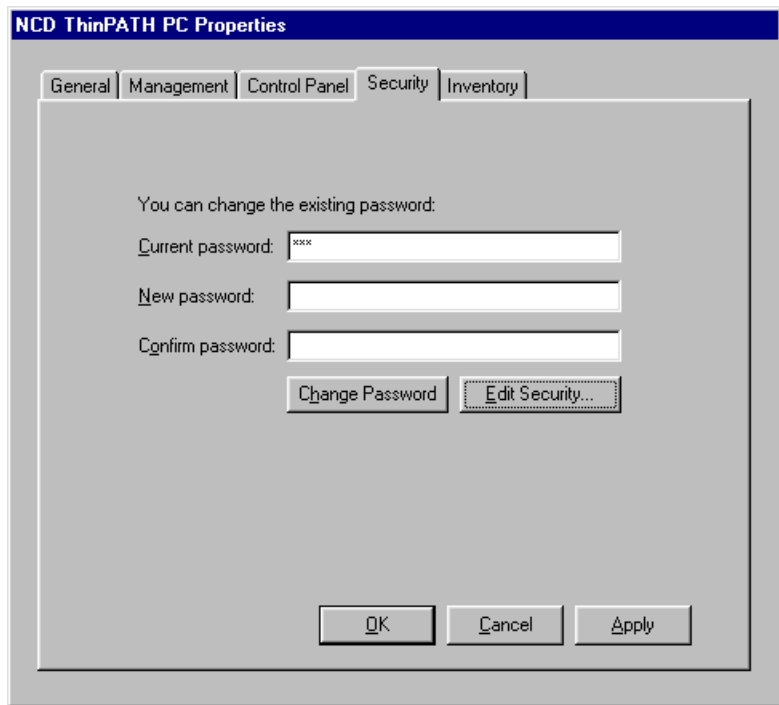
1. From ThinPATH PC, press **F2**. The NCD ThinPATH PC Properties dialog appears.

2. Select Security. If no password exists, this tab contains the Create Password dialog.



3. Enter the password in the Password field. Enter the exact same password in the Confirm password field and press **Enter** or click **Create**. The password is created and you do not need to click **OK** or **Apply** to save it.

When you create the password, the Create Password dialog is replaced by the Change Password and Edit Security dialog.



Entering a Password

If a password exists, the Security tab displays the Enter Password dialog. To enter the password:

1. Type the password in the Password field.
2. Click **Enter**.

The Security tab now displays the Change Password and Edit Security dialog. You can change the password, if desired, or Edit Security Properties.

Changing a Password

To change a password:

1. From NCD ThinPATH PC, press **F2** to enter NCD ThinPATH PC Properties.
2. Select Security > Enter Password and enter the password.
Note After you enter the password, the Change Password and Edit Security dialog replaces the Enter Password dialog.
3. Enter the current password.
4. Enter a new password in the New password field.
5. Enter the same new password in the Confirm password.
6. Click **Change Password**.

A message appears informing you that the password was changed.

Deleting a Password

To delete a password:

1. From NCD ThinPATH PC, press **F2**. The NCD ThinPATH PC Properties sheet appears.
2. Select the Security tab and enter the password.
After you enter the password, the Change Password and Edit Security dialog replaces the Enter Password dialog.
3. Enter the current password in the Current Password field and leave the other fields blank.
4. Click Change Password.

A message warns that deleting the password will remove all property security from ThinPATH PC. Confirm that this is your intention.

When the password is deleted, the screen displays the Create Password dialog. At this point, you can go to another tab or click **OK** to exit Terminal Properties.

Editing Security Properties

The Security Properties sheet provides you with a way to restrict access to the PC and disable changes to NCD ThinPATH PC Properties. The following Security Properties can be set:

Automatically Log on	Specifies a logon account (Username, Password, Domain) to be used for automatic logon when the PC starts.
Control Internet Explorer	Allows removal of the File menu from Internet Explorer, to prevent access to the local PC file system. Note On Windows 98 you must reboot the computer for this option to take effect.
Disable Shutdown	Disables the shutdown button on the ThinPATH PC Connection Manager.
Disable ThinPATH PC	Prevents the user from setting the Disable ThinPATH PC option on the NCD ThinPATH PC Properties > General tab and reverting to the Microsoft Windows desktop.
Display Properties	Limits access to the following tabs on the Display Properties dialog: <ul style="list-style-type: none"> ■ remove or disable Background tab ■ remove or disable Screen Saver tab ■ remove the Appearance tab ■ remove the Settings tab
Management tab	Prevents changes to the Home page and Management server fields on the NCD ThinPATH PC Properties > Management tab.
Restrict access to disk drives	Restricts access to some or all drives on the PC. Highlight the drive and click on that drive to select it.

Restrict control panel applications	Restricts which Control Panel applications display in the NCD ThinPATH PC Properties > Control Panel tab. Highlight the Control Panel application and click on the application to select it.
Restrict local applications	Allows all applications or a specific list of applications to be registered in the NCD Local Application Control Panel.

Troubleshooting

This section describes some exceptional circumstances that may occur on the NCD ThinPATH PC. If your problem is not addressed in this section, see your system administrator.

A Blank Screen Appears

Press **Ctrl+Alt+End** to display the ThinPATH PC Connection Manager. Alternatively, if you have active connections, press **Ctrl+Alt+Uparrow** to return to your application.

An Application Doesn't Respond

Press **Ctrl+Alt+Del** to bring up Windows Task Manager. Select the application and click **End Task**.

Removing ThinPATH PC Security Restrictions

If you used ThinPATH PC Properties > Security to restrict access to your PC, those properties are reset when ThinPATH PC is uninstalled.

Index

A

automatically log on 17

C

connection 3

definition 3

Connection Manager

disable shutdown

button 17

connections

adding 5

configuring 6

deleting 6

ending 3

managing 3

navigating between 7

starting 3

Control Panel 10

restrict applications 18

D

disk drives

restrict access to 17

display properties 17

I

Internet Explorer

control 17

L

local applications

restrict 18

running 11

M

management server

setting 13

Management tab 17

P

password

change 15

create 13

delete 15, 16

enter 15

S

security properties

automatically log on 17

control Internet

Explorer 17

disable shutdown

button from

Connection

Manager 17

disable ThinPATH

PC 17

display properties 17

edit 17

Management tab 17

restrict access to disk

drives 17

restrict control panel

applications 18

restrict local

applications 18

T

ThinPATH PC

configuring 8

definition 1

disable 9, 17

properties 8

secure access 13

shut down 2

start up 2

troubleshooting 18

V

version numbers

verifying 13

W

web applications

 launching 12