



## **Canaveral iQ™ WBT Add-on for Windows CE 2.12-based Wyse Terminals**

Release 1.5

### **Installation Guide**

---

#### **Abstract**

*This document addresses an administrator's and the user's interactions with Canaveral iQ. In addition, it also covers Installing/upgrading Canaveral WBT add-on for Wyse/WinCE 2.12.*

© 2002 New Moon Systems Inc. All rights reserved.

*The information contained in this document represents the current view of New Moon Systems Inc. on the issues discussed as of the date of publication. Because New Moon Systems Inc. must respond to changing market conditions, it should not be interpreted to be a commitment on the part of New Moon Systems, and New Moon cannot guarantee the accuracy of any information presented after the date of publication.*

*This white paper is for informational purposes only. NEW MOON MAKES NO WARRANTIES, EXPRESS OR IMPLIED, IN THIS DOCUMENT.*

*Complying with all applicable copyright laws is the responsibility of the user. Without limiting the rights under copyright, no part of this document may be reproduced, stored in or introduced into a retrieval system, or transmitted in any form or by any means (electronic, mechanical, photocopying, recording or otherwise) or for any purpose, without the express written permission of New Moon Systems Inc.*

*Canaveral iQ, Canaveral License Policy Manager, Canaveral Management Console are trademarks or registered trademarks of New Moon Systems Inc. Microsoft and Windows are registered trademarks of Microsoft Corporation. All other company, product and brand names are trademarks of their respective owners.*

*New Moon Systems • Two North Second Street Suite 1000 •  
San Jose, CA 95113-1319 • USA*

---

## Contents

<b>Send us your comments.....</b>	<b>1</b>
<b>Contact New Moon Systems Inc.....</b>	<b>2</b>
<b>Preface .....</b>	<b>3</b>
<i>Who should read this guide .....</i>	<i>3</i>
<i>Conventions used in this document.....</i>	<i>4</i>
<b>Getting Started.....</b>	<b>5</b>
<i>How to use this guide.....</i>	<i>5</i>
Installing/upgrading the Canaveral WBT add-on for Wyse/WinCE 2.12.....	5
<b>Installing/upgrading Canaveral WBT add-on for Wyse/WinCE 2.12 .....</b>	<b>5</b>
<i>Copy the Canaveral Files .....</i>	<i>5</i>
Place the files on the FTP server .....	5
Manage the Canaveral files from the Client .....	5
<i>Configure the connection.....</i>	<i>7</i>
<i>Select the application.....</i>	<i>9</i>
<b>New Moon Systems and Canaveral iQ.....</b>	<b>10</b>
<i>About New Moon Systems.....</i>	<i>10</i>
<i>About New Moon Canaveral iQ .....</i>	<i>10</i>
<i>Other sources of information.....</i>	<i>10</i>

---

---

## Send us your comments

**Send us your comments on the New Moon Canaveral iQ™ WBT Add-on for Windows CE 2.12-based Wyse Terminals.**

New Moon Systems Inc. welcomes your comments and suggestions on the quality and usefulness of this publication. Your feedback is an important part of the information used for updating documentation. Please send us your input regarding any of the following:

- Did you find any errors?
- Is the information clear?
- Do you need more information? If so, where should it be?
- Are the examples correct? Do you want more examples?
- What features of this manual did you like?

If you find any errors or have any other suggestions to improve the quality of this publication, please indicate the chapter, section, and page number (if available). You can submit comments to us in the following ways:

- Email  
documentation@newmoon.com
- FAX:  
408.296.8600  
Attn: Technical Publications
- U.S. Mail:  
Technical Publications  
New Moon Systems Inc.  
2 North Second Street, Suite 1000  
San Jose, CA 95113

If you would like a reply, please include your name, address, and telephone number.

---

## Contact New Moon Systems Inc.

If you want to contact sales or support at New Moon Systems Inc., here are some ways to do this.

Source	Availability
New Moon Systems Inc.	+1-408-296-8500
New Moon Technical Support Center	+1-408-248-7400
New Moon Sales Support Center	+1-888-672-4866 <sup>1</sup>
Main	+1-408-296-8500
Fax	+1-408-296-8600
Email to New Moon Systems	<a href="mailto:info@newmoon.com">info@newmoon.com</a>
New Moon Systems on the Web	<a href="http://www.newmoon.com">http://www.newmoon.com</a>

<sup>1</sup> Use this phone number only from within the United States.

---

## Preface

Welcome, this is your New Moon Canaveral iQ WBT Guide.

This guide contains all of the information you need to have to install and manage a Wyse terminal.

### Who should read this guide

This guide is for system and database administrators and other persons who want to deploy Wyse terminals in the Canaveral iQ environment.

This guide assumes you are familiar with the following:

- Basic Web Server administrative functions
- FTP server operations
- Wyse terminal

### Related publications

The Related Publications section identifies other publications related to this release of New Moon Canaveral iQ.

***New Moon Canaveral iQ User Guide.*** The User Guide describes activities performed by end users and provides user procedures. The procedures explain how to sign up to use Canaveral, how to select third-party applications, how to download the Canaveral Client software, and how to logon and use the third-party applications delivered from the Canaveral application servers.

***New Moon Canaveral iQ Installation Guide.*** The Installation Guide describes easy-to-follow instructions for installing Canaveral iQ. It also tells you how to prepare for a successful installation.

***New Moon Canaveral iQ Release Notes.*** The Release Notes describe last-minute changes to the product. This may be information that is not yet available in the regular product documentation set.

***New Moon Canaveral iQ Administrator Guide.*** The New Moon Canaveral iQ Administrator Guide is for the Canaveral administrator. It describes how to configure and operate Canaveral iQ using the Canaveral Management Console. It explains how to gather information and how to create and manage objects. It also explains how to set up, maintain, and monitor the Canaveral environment.

---

## Conventions used in this document

This document uses special conventions to make it easier for you to find and use the guide.

**Table 1 Text conventions**

Conventions	Meaning
Abbreviated menu command	Menu commands in text may be abbreviated rather than full. For example, the text may ask you to Click The Download Button, and the screen may show only a Download Now button.
Successive menu choices	Successive menu choices may appear with a greater than sign (>) between the items that you will select consecutively.
Mono-spaced text	Code examples appear in mono-spaced text. It may represent text you type or data you read.
Initial Capital Letters	This shows the names of menu items, dialog boxes, dialog box elements, and some commands.
<variable name>	Variables that you must place in a text may appear between a greater-than and a lesser-than sign. When you type the command, replace this string with your own information. For example, for C:\Document and Settings\<<your name>\Start Menu, John Smith might type something like C:\Document and Settings\JohnSmith\Start Menu.

---

---

## Getting Started

### How to use this guide

This How to Use This Guide topic describes the organization of the material.

### Installing/upgrading the Canaveral WBT add-on for Wyse/WinCE 2.12

The Installing/upgrading Canaveral WBT add-on for Wyse/WinCE 2.12 lists the activities you must complete before you install the add-on image or before you upgrade. If you are using a Wyse terminal, start with this section Installing/upgrading Canaveral WBT add-on for Wyse/WinCE 2.12.

## Installing/upgrading Canaveral WBT add-on for Wyse/WinCE 2.12

Follow this procedure if you are working with a Wyse terminal and your Wyse terminal does not come packaged with the Canaveral iQ add-on.

### Copy the Canaveral Files

#### Place the files on the FTP server

Perform the activities in this chapter before you install the add-on.

From the FTP server, perform the following:

1. Check the New Moon Web cite for the latest version of the client software.
2. Ensure that there is no beta version of the Canaveral software installed on the client devices. If there is a version, you will need to reflash the device with a new Wyse image before proceeding.
3. Place the two files, `canavera1iqaddon.bin` and `params.ini`, on an FTP server.

#### Manage the Canaveral files from the Client

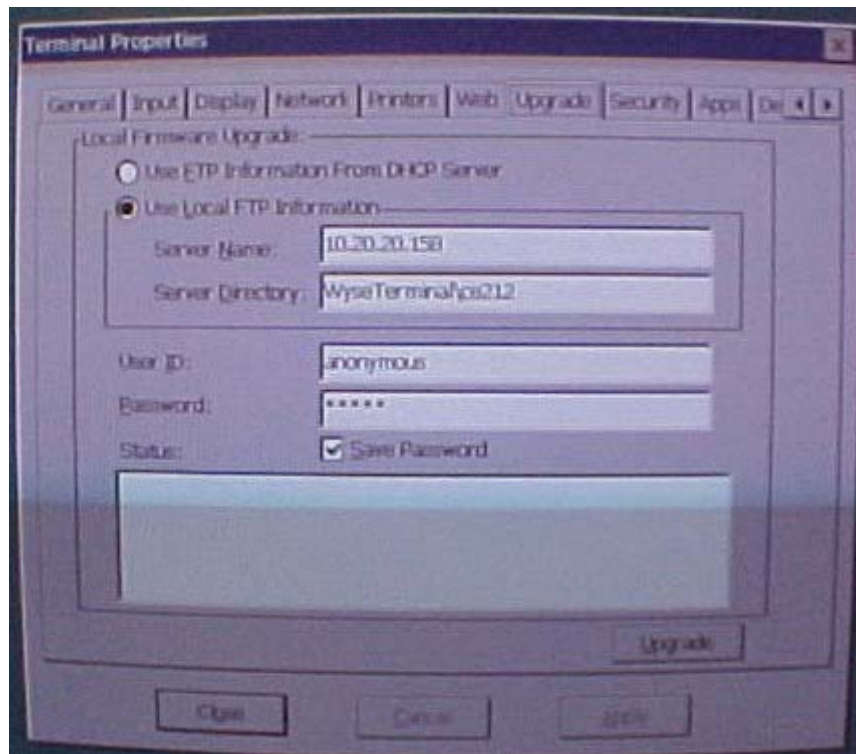
From the client, perform the following:

1. Press the <F2> function key on the client to enter the Terminal Properties.
2. Click the Upgrade tab.

To install the Canaveral iQ add-on:

3. Select the Use Local FTP Information radio button.
4. Enter the FTP server's IP address in the Server Name field.

5. Enter the proper directory path in the Server Directory field. This is the path to the ftproot, the path with the root folder.
6. Enter a user ID and password. The default User ID, Anonymous, and the password (five characters) will work when the FTP server permits anonymous connections.
7. Enable the Save Password option if you would like to save the password or uncheck this option if you do not want to save it.



8. When you are ready to proceed, click the Upgrade button.

Note:

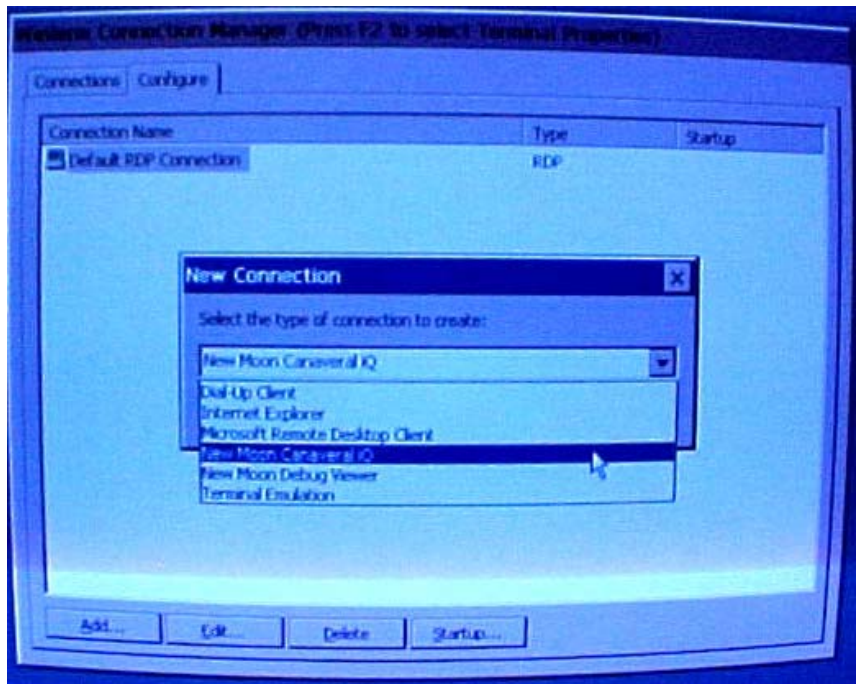
You will see a Firmware Upgrade Dialog Box appear with this warning:  
Warning! You are about to install new firmware. Once this process has started, you cannot cancel. You must let it complete or risk corrupting the flash memory.

9. Click the Start button that appears on the warning dialog box.
10. When this process completes, the machine re-starts.

## Configure the connection

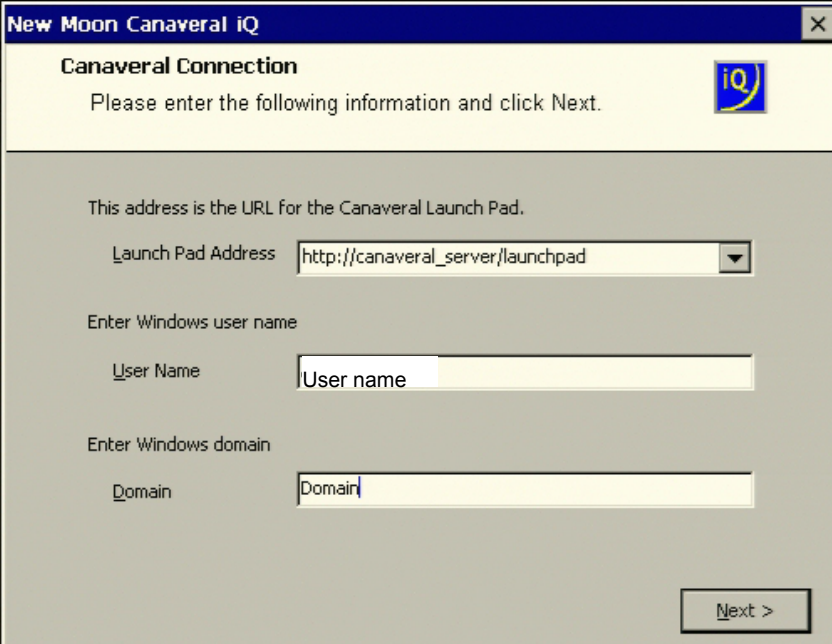
To select a Canaveral connection on the Client machine:

1. Click the Configure tab on the WinTerm Connection Manager.
2. Click the Add button.
3. In the New Connection dialog box, select New Moon Canaveral iQ from the drop-down list box and click OK.



To establish the connection:

4. Type the URL of the Canaveral Launch Pad that you intend to use in the Launch Pad address field. For example:  
<http://<servername>/launchpad>
5. Type the user name in the User Name field.
6. Type the domain that you will use in the Domain field. This domain should exist in Canaveral; it should have been provisioned by the Canaveral Administrator.
7. Click Next.



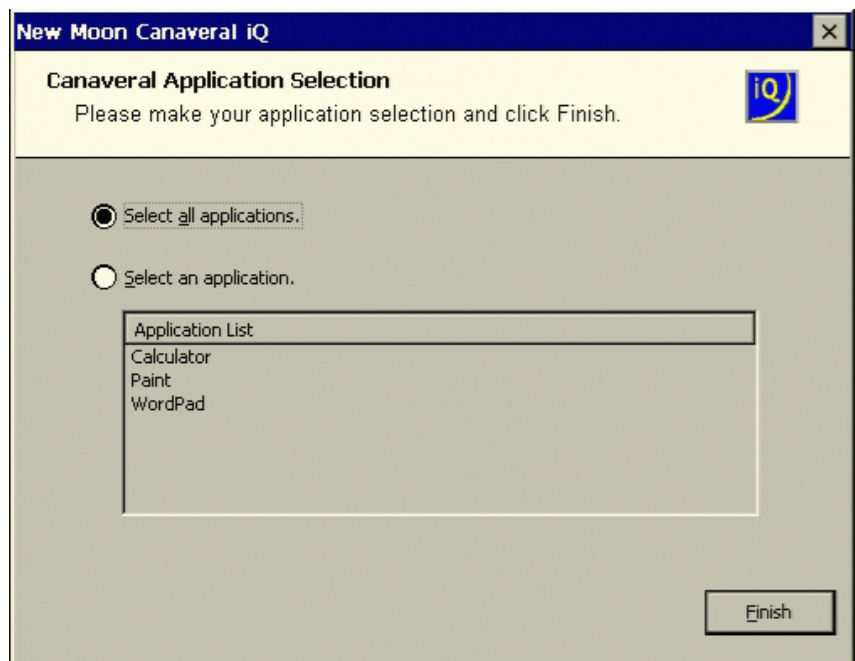
The screenshot shows a dialog box titled "New Moon Canaveral iQ" with a close button in the top right corner. The main heading is "Canaveral Connection" and the instruction is "Please enter the following information and click Next." There is an "iQ" logo in the top right. Below the instruction, it says "This address is the URL for the Canaveral Launch Pad." There are three input fields: "Launch Pad Address" with a dropdown arrow containing "http://canaveral\_server/launchpad", "User Name" with a text box containing "User name", and "Domain" with a text box containing "Domain". A "Next >" button is located at the bottom right.

## Select the application

To select Canaveral applications:

1. Choose the way you will select applications: Select All Applications or Select An Application . The latter permits you to select one application at a time.
2. If you choose Select All Applications, next click Finish.

A single Canaveral iQ connection appears on the Winterm Connection Manager dialog box under the Connection tab. You will use this connection to access all of the applications that are available to you from the Canaveral server.



3. If you choose Select An Application, you must select the application you want to use and then click Finish.

A single Canaveral application connection appears in the Winterm Connection Manager for this Canaveral team. Repeat this step to add connections to other individual applications.

As you add applications, you will be required to input your password once for each application you create.

---

## New Moon Systems and Canaveral iQ

### About New Moon Systems

Founded in 1995, New Moon Systems combines systems software expertise with practical experience in managing and operating mission-critical data centres. New Moon is quickly becoming a leader in software platforms and systems that enable enterprises and service providers to successfully deploy and manage server-based computing.

### About New Moon Canaveral iQ

New Moon Canaveral iQ makes central deployment and management of server-based Windows applications simple, intelligent, and cost effective. Serving both enterprises and service providers, Canaveral iQ increases the efficiency of IT operations and improves business performance.

### Other sources of information

You can find more information, as follows:

Source	Availability
New Moon Systems Inc.	+1-408-296-8500
New Moon Technical Support Center	+1-408-248-7400
New Moon Sales Support Center	+1-888-672-4866 <sup>1</sup>
Main	+1-408-296-8500
Fax	+1-408-296-8600
Email to New Moon Systems	<a href="mailto:info@newmoon.com">info@newmoon.com</a>
New Moon Systems on the Web	<a href="http://www.newmoon.com">http://www.newmoon.com</a>

<sup>1</sup> Use this phone number only from within the United States.



Two North Second Street, Suite 1000  
San Jose, CA 95113-1319 USA